



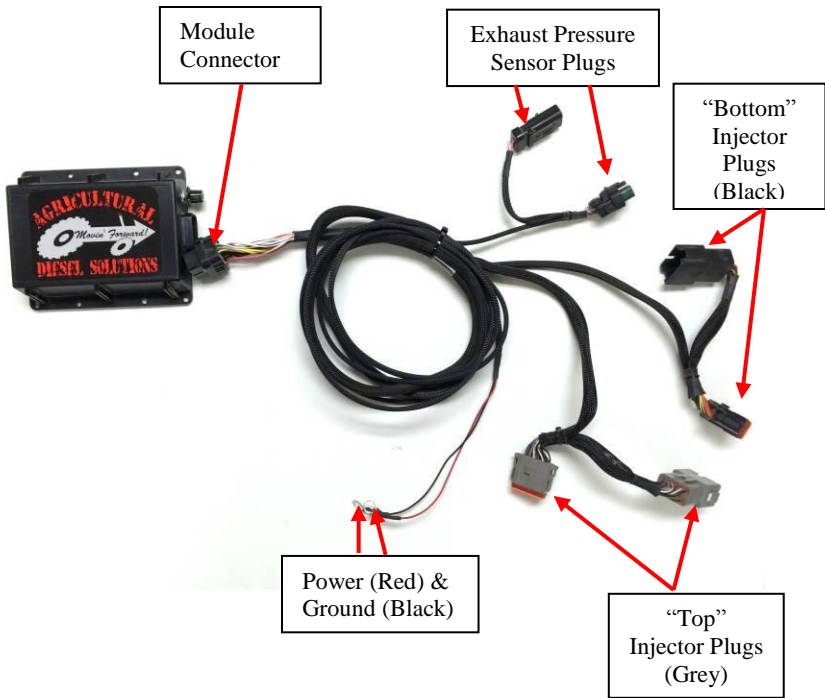
CAT4204

INSTALLATION INSTRUCTIONS

For Caterpillar C13 Tier 4 & Tier 4 Final Engines



CAT4204 Engine Module



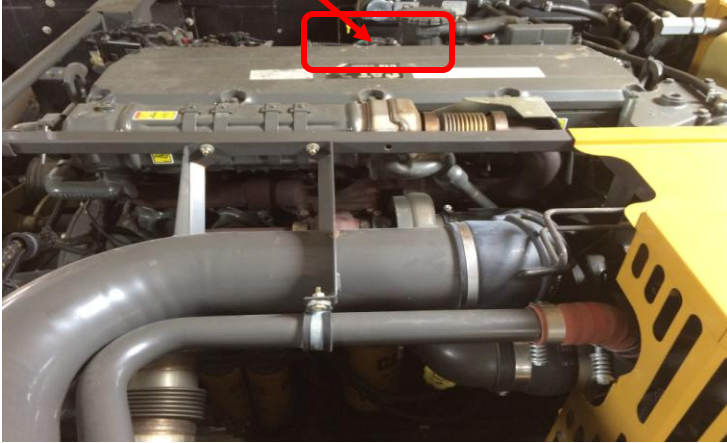
Note: If the customer requires help to install, check, troubleshoot, etc. the purchased module and receives this help from a dealer, mechanic or anyone that might charge for their services, the customer alone is responsible for payment on any charges incurred.

***Not registered for use in California.
*Product does not defeat or bypass any emission control devices.**

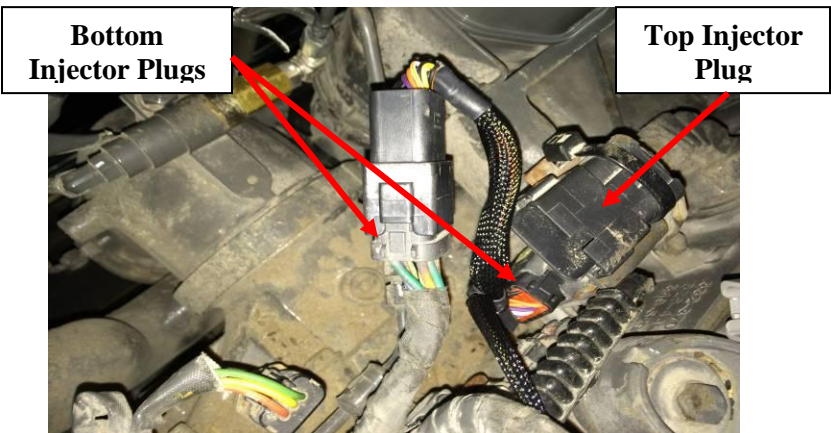
CAT C13 Tier 4 & Tier 4 Final Engine Installation Instructions

- 1) Locate the 2 Injector Harness Connectors on the interior side of the engine.

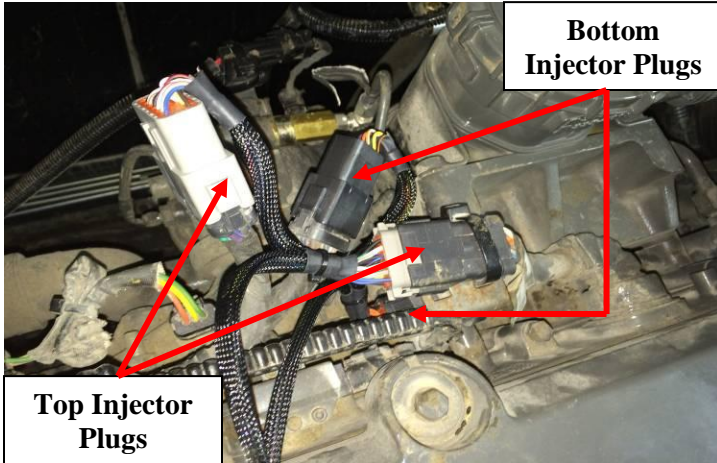
Note: There is 1 injector plug located directly above the 2nd injector plug.



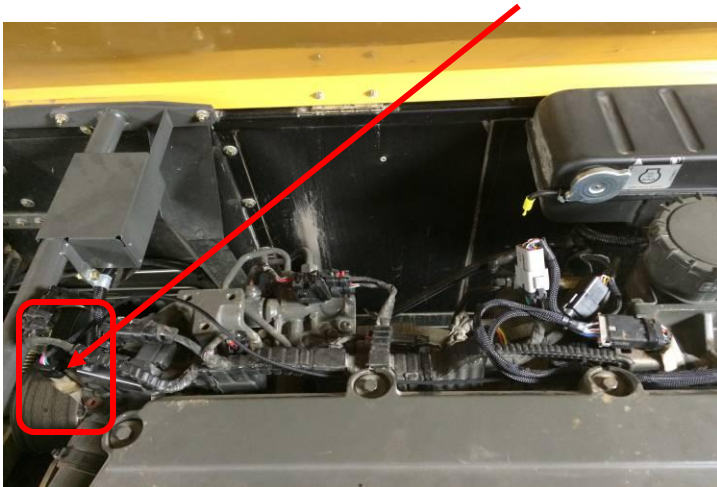
- 2) Disconnect the stock female Injector Harness plug located on the Bottom. Connect the female plug from the Performance Module Harness into the male Injector Harness Plug. Connect the stock female Injector plug into the corresponding male Harness plug on the new Harness. ***Note:** Use the Injector Connector on the Performance Module Harness marked "Bottom". The connectors on the module harness are Black that connect to the bottom plug.



- 3) Disconnect the stock female Injector Harness plug located on the Top. Connect the female plug from the Performance Module Harness into the male Injector Harness Plug. Connect the stock female Injector plug into the corresponding male Harness plug on the new Harness. **Note: Use the Injector Connector on the Performance Module Harness marked "Top". The connectors on the module harness are Grey that connect to the Top plug.*

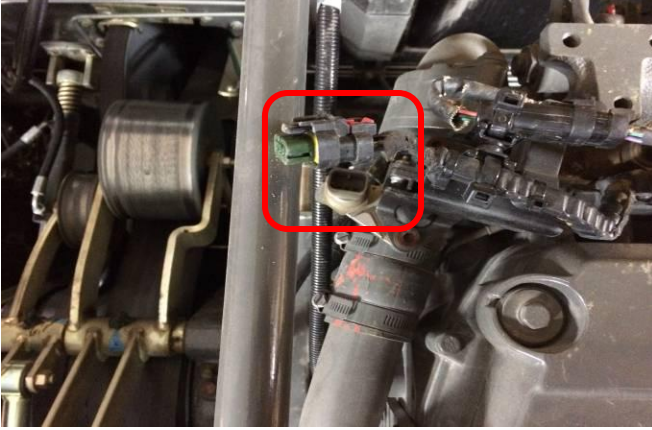


- 4) Locate the stock Exhaust Pressure Sensor.



5) Disconnect the stock Exhaust Pressure Sensor.

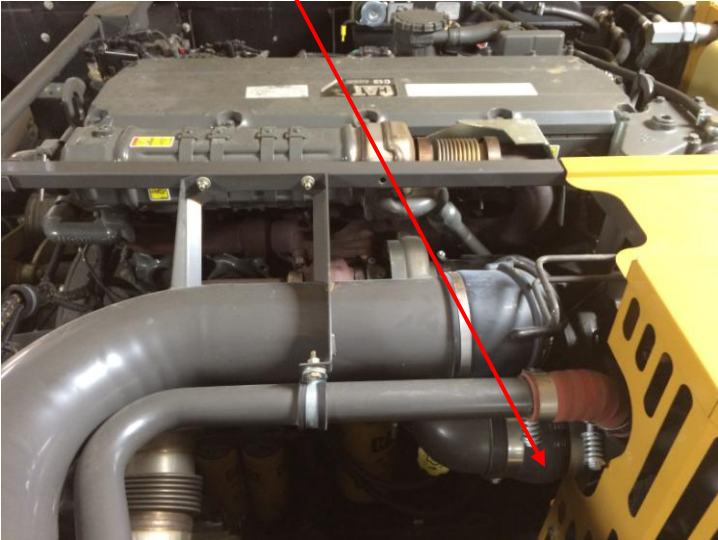
NOTE: The Exhaust Pressure Sensor is only used for +5 volt key-on voltage to turn the circuit board on. No adjustments are made to the Exhaust Pressure.



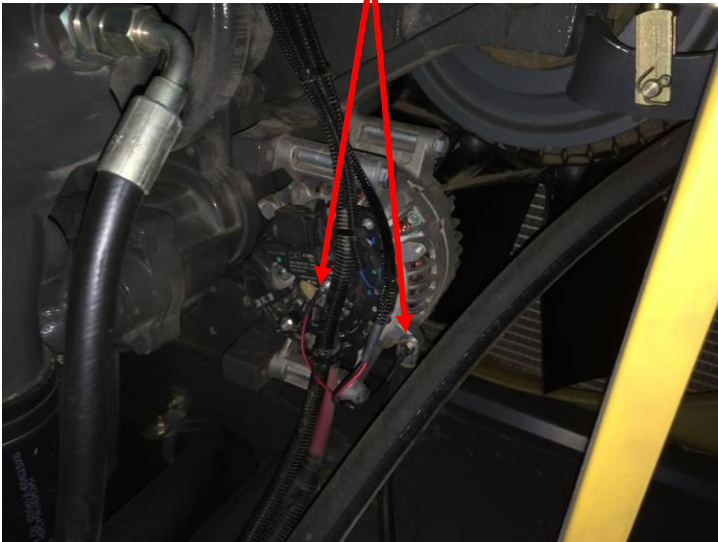
6) Plug the female connector from the module harness into the male exhaust pressure sensor plug. Plug male connector from module harness into the female exhaust pressure sensor plug.



7) Locate the alternator.



8) Connect the red wire with a ring terminal to the constant +12 volts on the alternator. Connect the black wire with a ring terminal to the Ground lug on the alternator.



- 9) Mount the module with the connector on the bottom side, as shown in the picture below. Use the supplied wire ties to mount the module. Keep away from any excessive heat sources.

****Mounting the module as shown will keep moisture from collecting inside the Module connector****



Power Levels

This Module has 3 power levels to select from: Stock, Low, and High. Select the level setting desired only at idle or when the engine is off.

****Do not change the level settings while the engine is under a load.**

The module at right is shown in the High position. High is all the way to the right (clockwise). Move the rotary switch counter-clockwise to the middle for the Low Position and to far left for the Stock Position.



	Position	HP Increase
1	STK	0%
2	Low	15%
3	High	30%

For Tech Support Call

1-855-343-7680

1-812-618-9166

***Not registered for use in California.**

***Product does not defeat or bypass any emission control devices.**

THIS IS A HIGH PERFORMANCE PRODUCT. USE AT YOUR OWN RISK.

Do not use this product until you have carefully read the following agreement. This sets forth the terms and conditions for the use of this product. The installation of this product indicates that the BUYER has read and understands this agreement and accepts its terms and conditions

DISCLAIMER OF WARRANTY AND LIMITATION OF LIABILITY

Power Systems Innovations, Inc and its successors, distributors, jobbers, and dealers (hereafter "SELLER") shall in no way be responsible for the product's proper use and service. It is the installer's responsibility to check for proper installation and if in doubt, contact the manufacturer. The SELLER assumes no liability regarding the improper installation or misapplication of its products. BUYER ACKNOWLEDGES IT HAS HAD THE OPPORTUNITY TO FULLY INSPECT THE PRODUCT. ACCORDINGLY, BUYER ACKNOWLEDGES THAT THE PRODUCT IS BEING SOLD IN "AS IS/WHERE IS" CONDITION AND WITH ALL FAULTS. EXCEPT AS OTHERWISE PROVIDED HEREIN, THERE ARE NO EXPRESS WARRANTIES WITH RESPECT TO THE GOODS, AND ALL IMPLIED WARRANTIES, INCLUDING BUT NOT LIMITED TO, IMPLIED WARRANTIES OF FITNESS FOR A PARTICULAR PURPOSE AND MERCHANTABILITY ARE LIKEWISE HEREBY EXPRESSLY AND FULLY DISCLAIMED. SELLER SHALL NOT BE HELD LIABLE FOR SPECIAL, INDIRECT, INCIDENTAL OR CONSEQUENTIAL DAMAGES OF ANY NATURE WITH RESPECT TO THE PRODUCTS (INCLUDING, WITHOUT LIMITATION, LOST PROFITS, LOST SALES, LOSS OF PRODUCTION, PROPERTY DAMAGE, PERSONAL INJURY OR LOSS OR DAMAGE RESULTING FROM INTERRUPTION OR FAILURE IN OPERATION OF THE PRODUCTS) AND BUYER HEREBY EXPRESSLY WAIVES AND DISCLAIMS ALL SUCH LIABILITY CLAIMS. THE BUYER ACKNOWLEDGES AND AGREES THAT THE DISCLAIMER OF LIABILITY CONTAINED HEREIN IS A MATERIAL TERM OF THE SALE OF THE PRODUCT AND, TO THE FULLEST EXTENT PERMITTED BY LAW, BUYER SHALL DEFEND, INDEMNIFY AND HOLD SELLER HARMLESS FROM ANY AND ALL CLAIMS, DEMANDS, CAUSES OF ACTION, CONTROVERSIES, LIABILITIES, FINES, LOSSES, COSTS AND EXPENSES (INCLUDING, BUT NOT LIMITED TO ATTORNEYS' FEES, EXPERT WITNESS EXPENSES AND LITIGATION EXPENSES) ARISING FROM OR RELATED TO SELLER'S PRODUCTS.

LIMITED LIFETIME WARRANTY

Power Systems Innovations, Inc (hereafter "SELLER") warrants that the product supplied shall conform to SELLER's specifications and shall be free from defects in design, material or workmanship for the life of the original BUYER. This Warranty shall not be extended, transferred, assigned or varied except by a written instrument signed by SELLER and BUYER. Products that have been returned to SELLER during the warranty period and accompanied by a dated proof of purchase receipt, with shipping and handling paid by the BUYER, and found to be defective in design, material or workmanship, in SELLER's sole discretion, may be repaired or replaced at SELLER's option and cost. All warranty claims hereunder are subject to approval by SELLER upon examination of the product. If the product is found not to be defective by SELLER, the product may be returned to BUYER at BUYERS cost. Under no circumstances shall the SELLER be liable for any labor charged or travel time incurred in diagnosis for defects, removal, or reinstallation of this product, or any other expenses. This warranty is void on any products that show evidence of misapplication, negligence, improper installation, abuse, lack of proper maintenance or alteration from its original design.

IN THE EVENT THAT THE BUYER DOES NOT AGREE WITH THIS AGREEMENT: THE BUYER MAY PROMPTLY RETURN THIS PRODUCT, IN A NEW AND UNUSED CONDITION, WITH A DATED PROOF OF PURCHASE, TO THE PLACE OF PURCHASE WITHIN THIRTY (30) DAYS FROM DATE OF PURCHASE FOR A FULL REFUND. THE INSTALLATION OF THIS PRODUCT INDICATES THAT THE BUYER HAS READ AND UNDERSTANDS THIS AGREEMENT AND ACCEPTS ITS TERMS AND CONDITIONS.